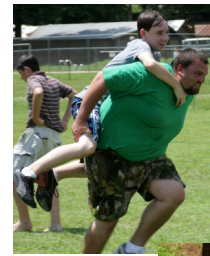




# "SummerLIVE" 2011



Jerry Miller, Camp Director  
PO Box 175, Lonoke Arkansas 72086  
501.676.6558 work & fax / 501.259.8026 cell  
cbajerry@yahoo.com

March 1, 2011

Hello to all Campers!!!

It's that time again to begin getting ready for camp. I'm looking forward to a great time this year and God's blessings.

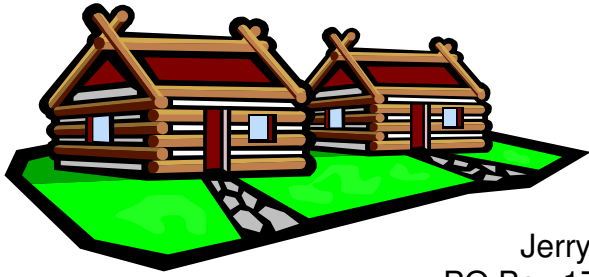
Enclosed are camper registration forms, sign-up sheet, counselor's handbook, Rules & Regulations for SummerLIVE Camp, and the Church Registration Form. Copies of tentative Children and Youth Schedules can be found in the Guide Book. Please make copies of the registration forms as needed. Remember, each counselor and camper must complete a registration form before coming to camp. Also, you will find all the enclosed forms on our website at [www.carolinebaptistassociation.com](http://www.carolinebaptistassociation.com). If you have any questions, please contact me.

Please go over the "Rules & Regulations for SummerLIVE Camp" with all your campers and counselors. Please make the copies of the registration forms front & back so parents are aware of the requirements and appropriate dress as detailed on the back of the form. It is important that we get a good start on camp at the church level before we meet together at the camp.

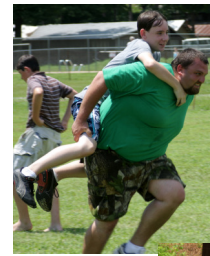
This year we are asking Churches to register campers by June 13. Individuals registering after June 20 will be required to include an additional late registration fee of \$10.00. Due to the number in attendance last year and the anticipation of new churches attending this year we encourage early registration. There are a limited number of air conditioned cabins and they will be assigned in the order of registrations received. The non-air conditioned cabins proved very nice in the evenings and will be made available to remaining registrations. Fans are always welcomed in either situation to circulate the air.

Registration:

- 1) Collect completed individual registration forms and a minimum deposit of \$25.00 for each individual coming to camp (due June 13). The deposit will be applied to the full amount due.
- 2) Complete the Church Registration Form.
- 3) Make copies of all registration forms for your records.
- 4) Send original completed forms and a check made out to Caroline Baptist Association for **at least the minimum amount due of \$25 per person**. Send it to Caroline Baptist Association, PO Box 175, Lonoke, AR 72086. If desired, the full amount due for camper fees can be sent at this time.
- 5) A \$10.00 per camper late registration fee is due for registration forms received after June 20.
- 6) All remaining camp fees are due by Monday, June 27 and can be either mailed to Nina Burgan at the Association office or brought to camp when you check-in.



# "SummerLIVE" 2011



Jerry Miller, Camp Director  
PO Box 175, Lonoke Arkansas 72086  
**501.676.6558 work & fax / 501.259.8026 cell**  
cbajerry@yahoo.com

- 7) Please remit one check from the Church to cover deposits and camp fees. Do not send individual checks from campers.
- 8) Deposits are not refundable for campers who cannot attend. A substitute camper may be added without any additional cost.

Check-in at camp starts at Noon at the large tabernacle (to the left as you enter). Remember that lunch will not be served on Monday. If you come early, you will have to eat on the way or bring your own lunch. The first meal will be dinner on Monday.

The success of our camp each year rests with our counselors getting involved. We need counselors to be encouragers for our campers in ALL aspects of camp. This year we will have a camp meeting for ALL campers at 4:00 p.m. at the large tabernacle. During this time we plan to talk of general information regarding the camp.

If you have adults that would be interested in serving as Recreation Director/Assistant, Kitchen Helpers, or Teachers, please let us know. The registration fee still applies to these volunteers as it allows us to maintain possible scholarships for unchurched kids to attend camp.

Please lift up camp week in prayer as often as you can between now and when we arrive in June. God bless you as you get ready for camp. Hope to see you at SummerLIVE June 27-July 1!

In His Love,

*Jerry*

Jerry Miller  
Camp Director  
PO Box 175  
Lonoke Arkansas 72086  
501.676.6558 (work)  
501.259.8026 (cell)  
[cbajerry@yahoo.com](mailto:cbajerry@yahoo.com)